



**FSD-18A, 21A & 23A STEERABLE DRIVE AXLE
ILLUSTRATED PARTS MANUAL
625-0517()**

NOTES:

A large, empty rectangular box with a thin black border, intended for handwritten notes.

ILLUSTRATED PARTS MANUAL

Table of Contents

FSD-18A, 21A & 23A:

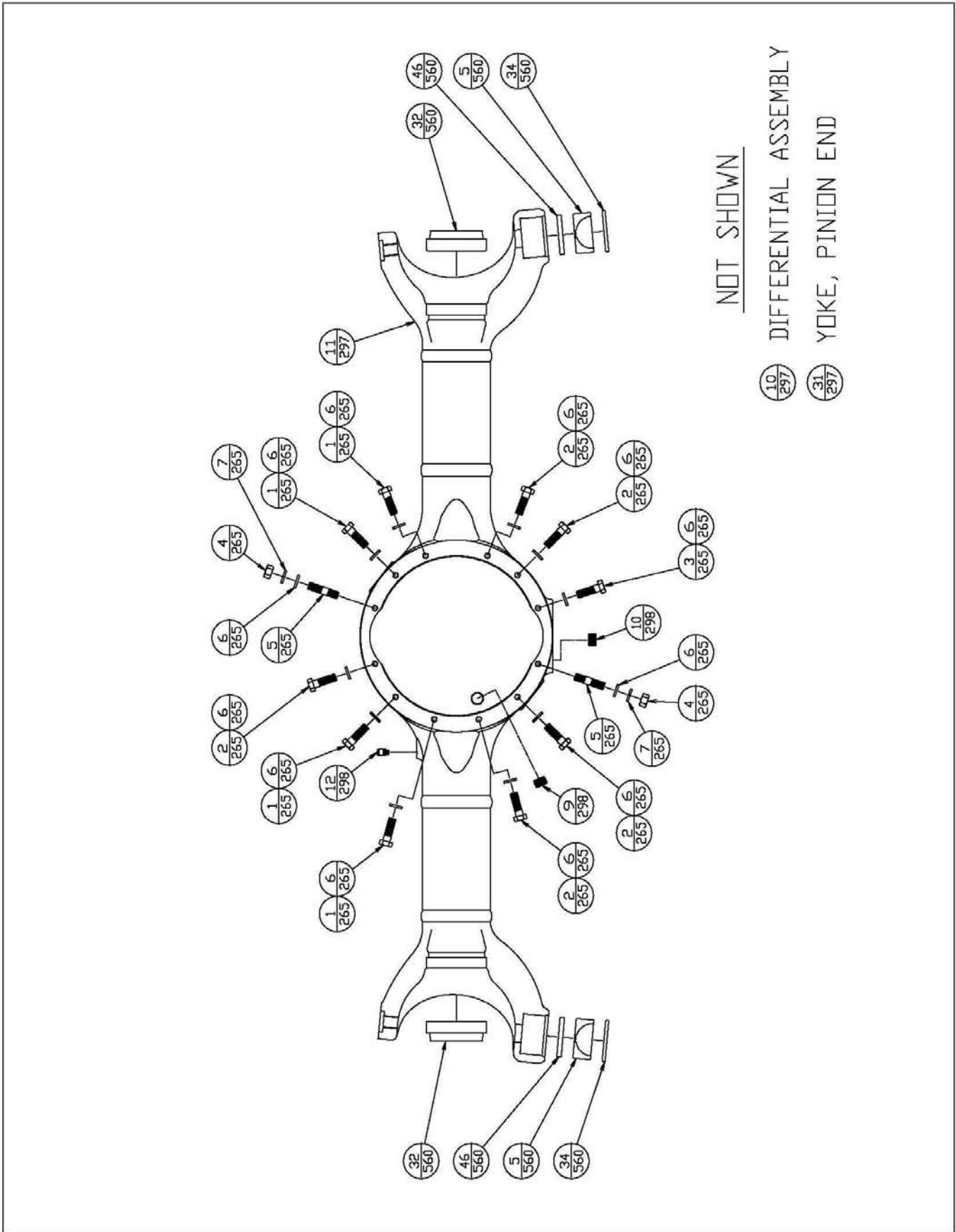
Axle Housing Illustrated Parts.....	3
Axle Housing Parts List.....	4
Steerable Drive End Illustrated Parts.....	5
Steerable Drive End Parts List.....	6
Steerable Drive End Illustrated Parts 02.....	7
Steerable Drive End Parts List 02.....	8
Brake Illustrated Parts.....	9
Brake Parts List.....	10
Universal-Joint Illustrated Parts.....	11
Universal-Joint Parts List.....	12
Tie Rod Illustrated Parts	13
Tie Rod Parts List.....	14

To Use This Parts Manual.

1. Refer to the exploded view which illustrates the needed part.
2. Find the required part(s) in the exploded view and then note the item number(s).
3. Locate the item number(s) in the parts list for part number, description and quantity.
4. Before ordering part(s) for a Fabco axle, please refer to the name plate located on the left rear of the axle housing for serial number, part number and ratio.

Part numbers contained in this manual were in effect at the time the manual was approved for printing and are subject to change without notice or liability. Fabco Automotive Corporation reserves the right to change parts at any time.

AXLE HOUSING ILLUSTRATED PARTS



AXLE HOUSING PARTS LIST

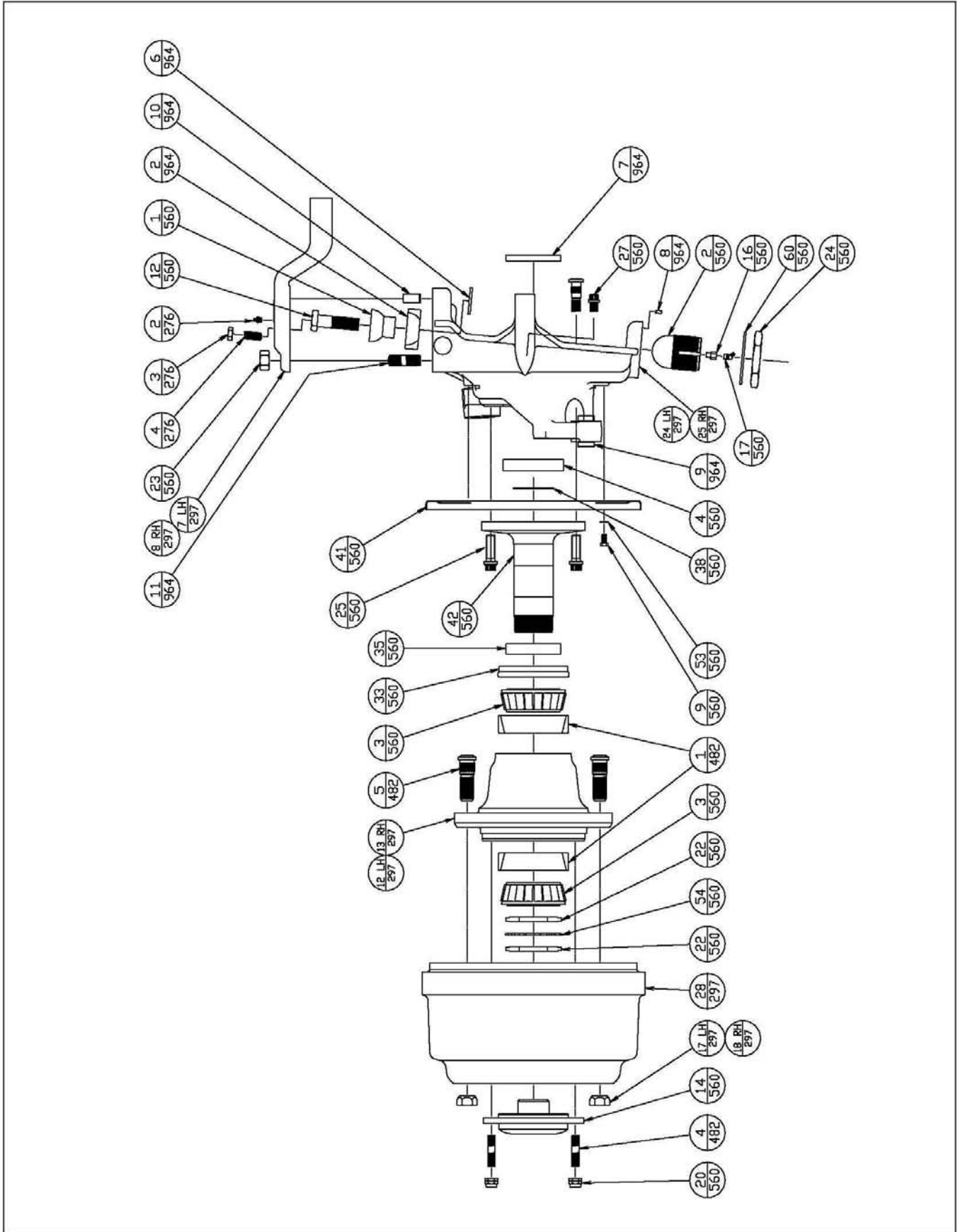
<u>ITEM</u>	<u>PART NUMBER</u>	<u>DESCRIPTION</u>	<u>QUANTITY</u>
1/265	283-0325	BOLT, HEX HEAD, M12-1.75 x 30mm, CL8.8 STL, ZINC PLATED	4
2/265	283-0326	BOLT, HEX HEAD, M12-1.75 x 35mm, CL8.8 STL, ZINC PLATED	5
3/265	283-0327	BOLT, HEX HEAD, M12-1.75 x 40mm, CL8.8 STL, ZINC PLATED	1
4/265	688-0776	NUT, HEX, M12 x 1.75, CL 8 STEEL, ZINC PLATED	2
5/265	788-0579	STUD, M12 x 1.75 x 55mm, STEEL, BLACK OXIDE	2
6/265	927-0886	WASHER, FLAT, M12, HS STEEL, ZINC PLATED	12
7/265	927-0887	WASHER, SPRING, LOCK, M12, HS STEEL, ZINC PLATED	2
10/297	343-0470-001	DIFFERENTIAL ASSEMBLY*	1
11/297	475-04XX-XXX	AXLE HOUSING ASSEMBLY (V)	1
31/297	352-1576	FLANGE, ASSEMBLY, COMPANION 1710/1810	1
9/298	758-0229	PLUG, 3/4 NPT SQUARE COUNTERSUNK	1
10/298	758-0274	PLUG, 3/4 NPT SQUARE SOCKET HEAD MAGNETIC	1
12/298	836-0222	VENT, BREATHER, 1/8 NPT	1
5/560	234-0472	BEARING, LOWER KINGPIN, NYLATRON	2
32/560	732-0310	SEAL ASSEMBY, FLOATING, INNER AXLE	2
34/560	732-0446	SEAL, LOWER KINGPIN	2
46/560	793-0488	PLATE, LOWER KINGPIN	2

DIFFERENTIAL ASSEMBLY:*PART NUMBER:****RATIO:**

343-0470-001	3.31
343-0470-002	3.73
343-0470-003	4.10
343-0470-004	4.56
343-0470-005	4.88
343-0470-006	5.13
343-0470-007	5.71
343-0470-008	6.33

(V) ITEM MAY VARY, REFERENCE SPECIFIC AXLE SERIAL NUMBER AND PART NUMBER ON SERIAL DATA PLATE.

STEERABLE DRIVE END ILLUSTRATED PARTS

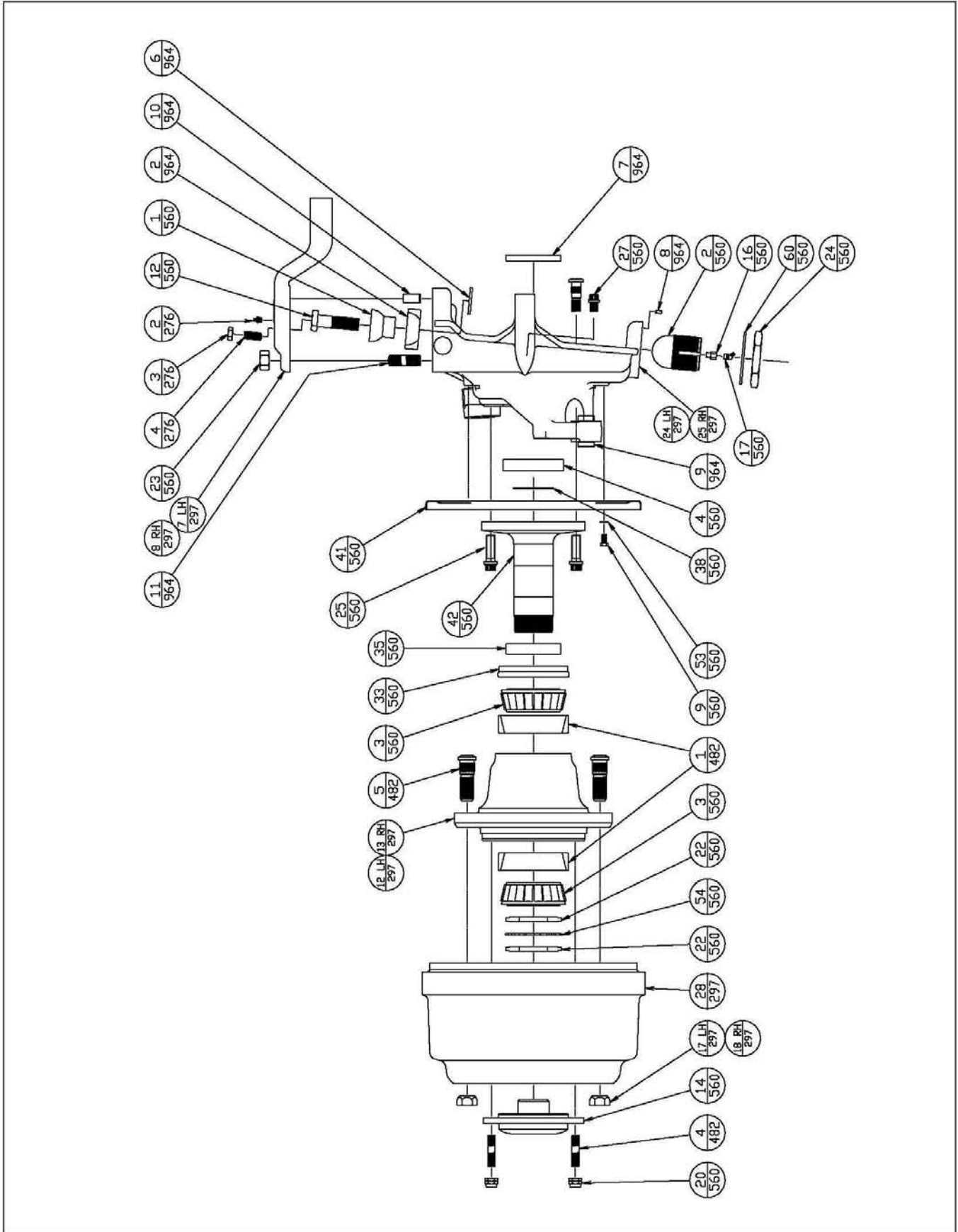


STEERABLE DRIVE END PARTS LIST

ITEM	PART NUMBER	DESCRIPTION	QUANTITY
2/276	358-0222	FITTING, GREASE, 1/8 NPT	2
3/276	688-0636	NUT, JAM, HEX, 5/8-18	2
4/276	724-0723	SCREW, SOCKET SET, 5/8-18 x 1 3/4 LARGE	2
7 LH/297	297-094X-XXX	STEERING ARM (V)	1
8 RH/297	297-094X-XXX	STEERING ARM (V)	1
12 LH/297	482-0068-XXX	ASSEMBLY, HUB, ISO, 285.75mm BC W/ ABS (V)	1
13 RH/297	482-0068-XXX	ASSEMBLY, HUB, ISO, 285.75mm BC W/ ABS (V)	1
17 LH/297	688-0756	NUT, WHEEL STUD, M22 x 1.5	10
18 RH/297	688-0756	NUT, WHEEL STUD, M22 x 1.5	10
24 LH/297	964-1296-XXX	ASSEMBLY YOKE, SPINDLE, ES, LEFT HAND SIDE (V)	1
25 RH/297	964-1296-XXX	ASSEMBLY YOKE, SPINDLE, ES, RIGHT HAND SIDE (V)	1
28/297	378-0336	DRUM, BRAKE, 285.75mm BC ISO	2
1/482	233-0462	BEARING, CUP	4
4/482	788-0553-002	STUD, .62 DIA. x 2.62 LG. GRADE 8	16
5/482	788-0574-001	STUD, WHEEL, M22 x 3.71 LARGE	20
1/560	225-0294	BALL, UPPER KINGPIN	2
2/560	225-0295	BALL, STUD	2
3/560	233-0459	BEARING, CONE	4
4/560	232-0398	BEARING, BALL	2
9/560	265-0322	BOLT, HEX HEAD, 3/8-16 x 3/4, GRADE 5	8
12/560	283-0254	BOLT, HEX HEAD, 1-14 x 3-1/2, GRADE 8	2
14/560	352-1527	DRIVE FLANGE	2
16/560	355-0698	ADAPTER, GREASE FITTING	2
17/560	358-0223	GREASE FITTING, 1/8 NPT, 45°	4
20/560	688-0292	NUT, 5/8-18 UNJF-3B, HIGH TENSILE, HEX	16
22/560	688-0699	NUT, WHEEL, BEARING	4
23/560	688-0737	NUT, 7/8-14 HEX UNF-2B, SELF-LOCKING	4
24/560	688-0754	NUT, LOWER KINGPIN, LOCKING	2
25/560	724-1765	SCREW, 3/4-10 X 2-1/4, FLANGED WITH DRI-LOCK	20
27/560	724-0625	SCREW, CAP, 5/8-11 x 1 1/4, 12PT FLANGED	2
33/560	732-0373	SEAL, HUB	2
35/560	736-0967	RING, HUB SEAL	2
38/560	762-0246	SNAP RING, DRIVE YOKE BRG., RETAINER.	2

(V) ITEM MAY VARY, REFERENCE SPECIFIC AXLE SERIAL NUMBER AND PART NUMBER ON SERIAL DATA PLATE.

STEERABLE DRIVE END ILLUSTRATED PARTS 02

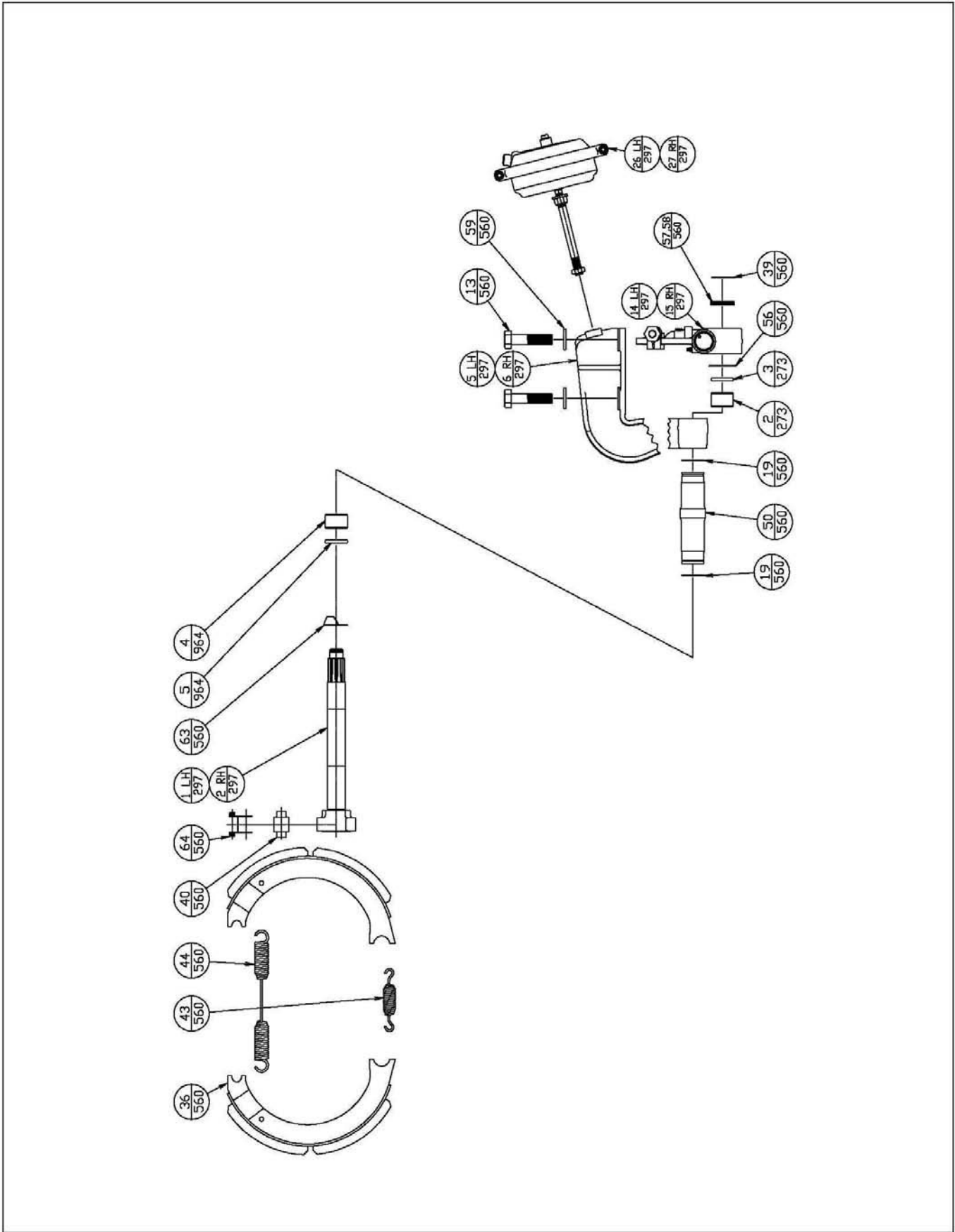


STEERABLE DRIVE END PARTS LIST 02

<u>ITEM</u>	<u>PART NUMBER</u>	<u>DESCRIPTION</u>	<u>QUANTITY</u>
41/560	772-0272	BRAKE DUST SHIELD	2
53/560	927-0748	WASHER, 3/8 SPRING LOCK,SPLIT	8
54/560	927-0769	WASHER, WHEEL NUT LOCKING	2
60/560	927-0858	WASHER, LOWER KING PIN, LOCK	2
1/964	964-0296-XXX	YOKE, SPINDLE, LEFT (V)	1
	964-0296-XXX	YOKE, SPINDLE RIGHT (V)	1
2/964	234-0473	BEARING, NYLATRON, UPPER KING PIN, LARGE AXLES	2
6/964	722-0447	SEAL, UPPER KING PIN	2
7/964	732-0449	SEAL, OUTER YOKE SHAFT	2
8/964	746-0742	DOWEL PIN, 1/4 x 1/2 OVERSIZE	2
9/964	746-0746	PIN, BRAKE ANCHOR, STAKE	2
10/964	746-0747	DOWEL PIN, 3/4 x 1-1/2 STANDARD	2
11/964	788-0563-002	STUD, STEERING ARM	4

(V) ITEM MAY VARY, REFERENCE SPECIFIC AXLE SERIAL NUMBER AND PART NUMBER ON SERIAL DATA PLATE.

BRAKE ILLUSTRATED PARTS

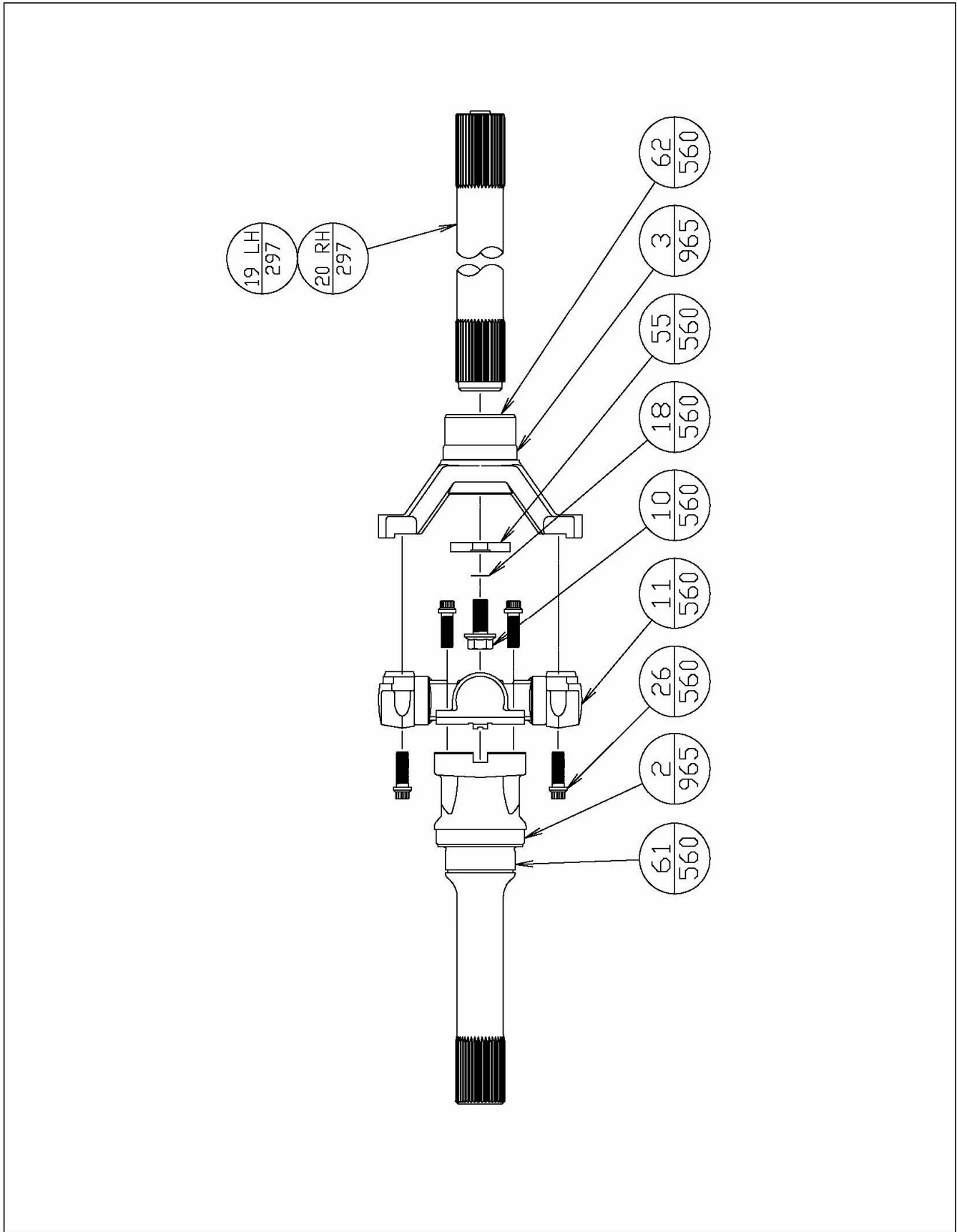


BRAKE PARTS LIST

<u>ITEM</u>	<u>PART NUMBER</u>	<u>DESCRIPTION</u>	<u>QUANTITY</u>
2/273	287-0279	BUSHING	2
3/273	732-0436	SEAL, CAM SHAFT	2
1 LH/297	226-0246	'S' CAMSHAFT, ES BRAKES, LEFT HAND SIDE, LARGE AXLE	1
2 RH/297	226-0247	'S' CAMSHAFT, ES BRAKES, RIGHT HAND SIDE, LARGE AXLE	1
5 LH/297	273-18XX	ASSEMBLY, BRACKET, BRAKE, LEFT HAND SIDE (V)	1
6 RH/297	273-18XX	ASSEMBLY, BRACKET, BRAKE, RIGHT HAND SIDE (V)	1
14 LH/297	538-0XXX	AUTO SLACK ADJUSTER, LEFT HAND SIDE (V)	1
15 RH/297	538-0XXX	AUTO SLACK ADJUSTER, RIGHT HAND SIDE (V)	1
26 LH/297	243-00XX-XXX	CHAMBER, BRAKE, AIR, LEFT HAND SIDE (V)	1
27 RH/297	243-00XX-XXX	CHAMBER, BRAKE, AIR, RIGHT HAND SIDE (V)	
13/560	283-0256	BOLT, 7/8-9 UNC x 3-1/2 GRADE 8, HEX HEAD	4
19/560	675-0031-V14	O-RING	4
36/560	743-0274	SHOE & LINING ASSEMBLY, 16.5 X 7.0 ES BRAKE	4
39/560	762-0343	SNAP RING, CAMSHAFT RETAINER.	2
40/560	765-0287	ROLLER, ES BRAKE SHOE	4
43/560	777-0549	SPRING, ES BRAKE SHOE RETAINING	4
44/560	777-0555	SPRING, ES BRAKE SHOE RETURN	2
50/560	884-0279	TUBE, CAMSHAFT	2
56/560	927-0847	WASHER, S-CAM	4
57/560	927-0848	WASHER, .031 CAMSHAFT SHIM	4
58/560	927-0849	WASHER, .059 CAMSHAFT SHIM	4
59/560	927-0852	WASHER, 7/8 PLAIN	4
63/560	927-0868	WASHER, S-CAM HEAD, ES BRAKES	2
64/560	772-0278	SPRING, RETAINER, ROLLER, ES BRAKES	4
4/964	287-0279	BUSHING	2
5/964	732-0436	SEAL, CAM SHAFT	2

(V) ITEM MAY VARY, REFERENCE SPECIFIC AXLE SERIAL NUMBER AND PART NUMBER ON SERIAL DATA PLATE.

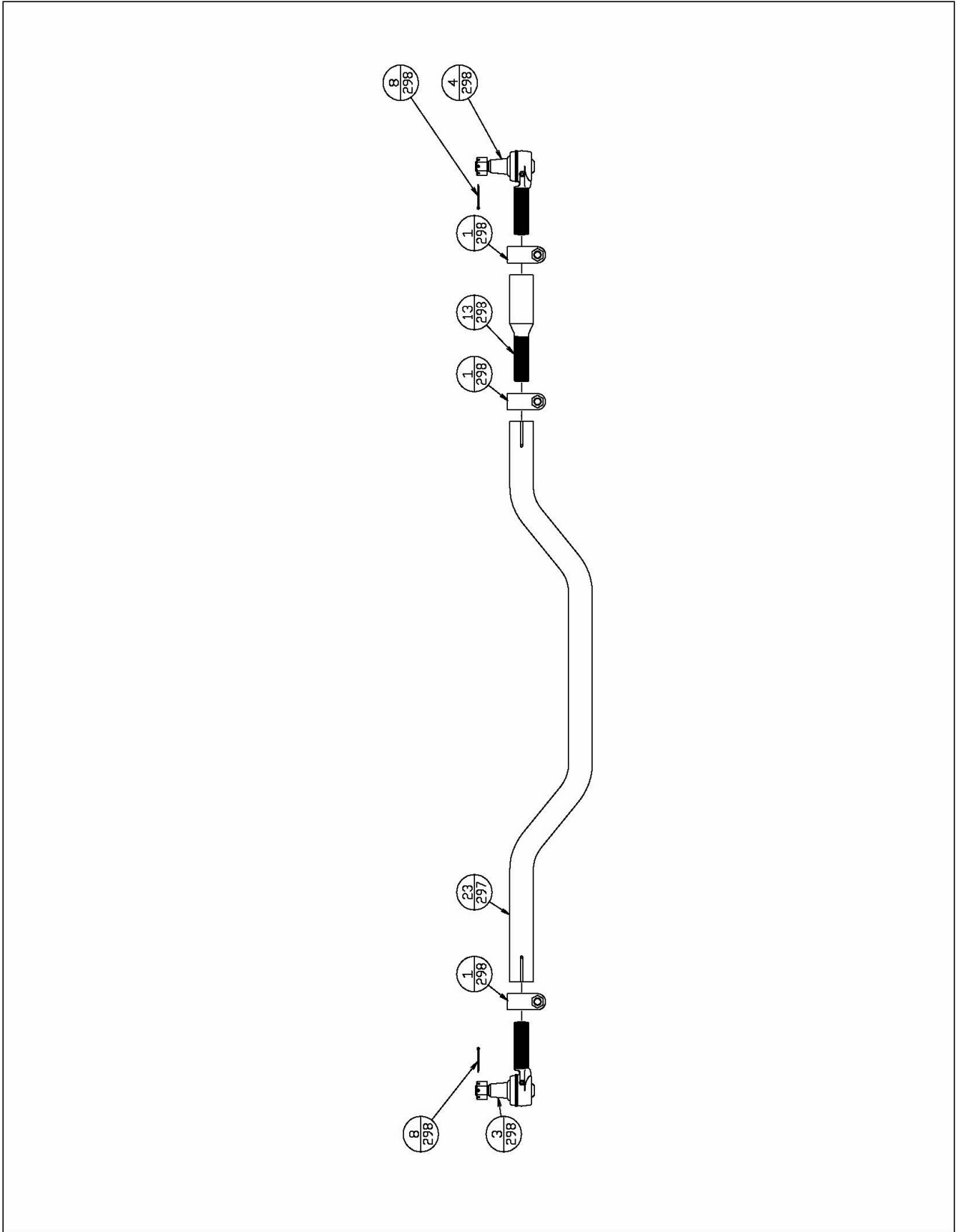
UNIVERSAL JOINT ILLUSTRATED PARTS



UNIVERSAL JOINT PARTS LIST

<u>ITEM</u>	<u>PART NUMBER</u>	<u>DESCRIPTION</u>	<u>QUANTITY</u>
19 LH/297	769-0528-002	SHAFT, AXLE, INNER, LEFT HAND SIDE	1
20 RH/297	769-0392-017	SHAFT, AXLE, INNER, RIGHT HAND SIDE	1
10/560	265-0989	BOLT, 5/8-18 x 1-1/2 HEX HEAD, FLANGED	2
11/560	277-0274	ASSEMBLY, CROSS & BEARING	2
18/560	675-0016-B46	O-RING, .614 ID, .070 THICK, BUNA-N	2
26/560	265-0678	BOLT, 1/2-20 x 2-1/4, GRADE 8, HEX HEAD	16
55/560	927-1776	WASHER	2
61/560	964-1238	YOKE SHAFT, OUTER	2
62/560	965-2938	YOKE, SUB-ASSEMBLY	2
2/965	756-0337	RING, WEAR	2
3/965	756-0335	RING, WEAR	2

TIE ROD ILLUSTRATED PARTS



TIE ROD PARTS LIST

<u>ITEM</u>	<u>PART NUMBER</u>	<u>DESCRIPTION</u>	<u>QUANTITY</u>
23/297	884-0242-018	TIE ROD	1
1/298	255-0449	CLAMP ASSY, 2.00 DIAMETER TUBE	3
3/298	363-0272	TIE ROD END, LEFT HAND	1
4/298	363-0273	TIE ROD END, RIGHT HAND	1
8/298	749-0225	COTTER PIN, 1/8 x 2, STEEL	2
13/298	884-0248	ADJUSTER	1